

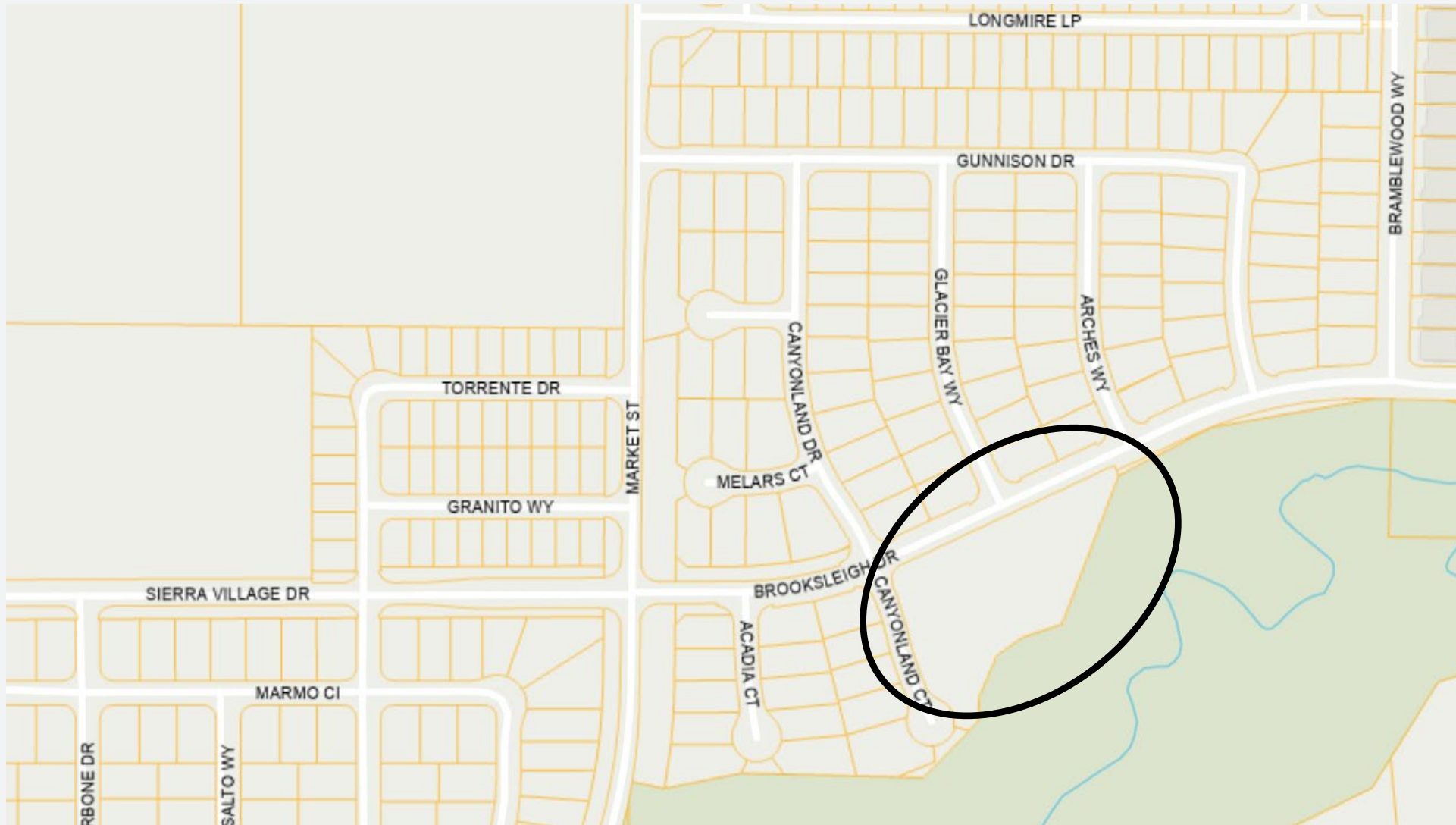


DF-50 Public Workshop

June 16, 2026 (In-person at Riley Meeting Room)

Tara Gee, Park Planning & Development Manager
Jill Nunes, Parks, Recreation & Libraries Director
Heather Buck, Sr Project Manager
Joel DeJong, Project Manager
Josh Cervantes, Project Manager
Diana Vazquez, Project Manager
Jennifer Adona, Office Assistant

Vicinity Map



Park Planning Process

Roseville Parks, Recreation & Libraries

Average time required to build a park = 24-36 Months ±



For more information visit:

roseville.ca.us/parks/parks_n_facilities/planning_our_parks/default.asp



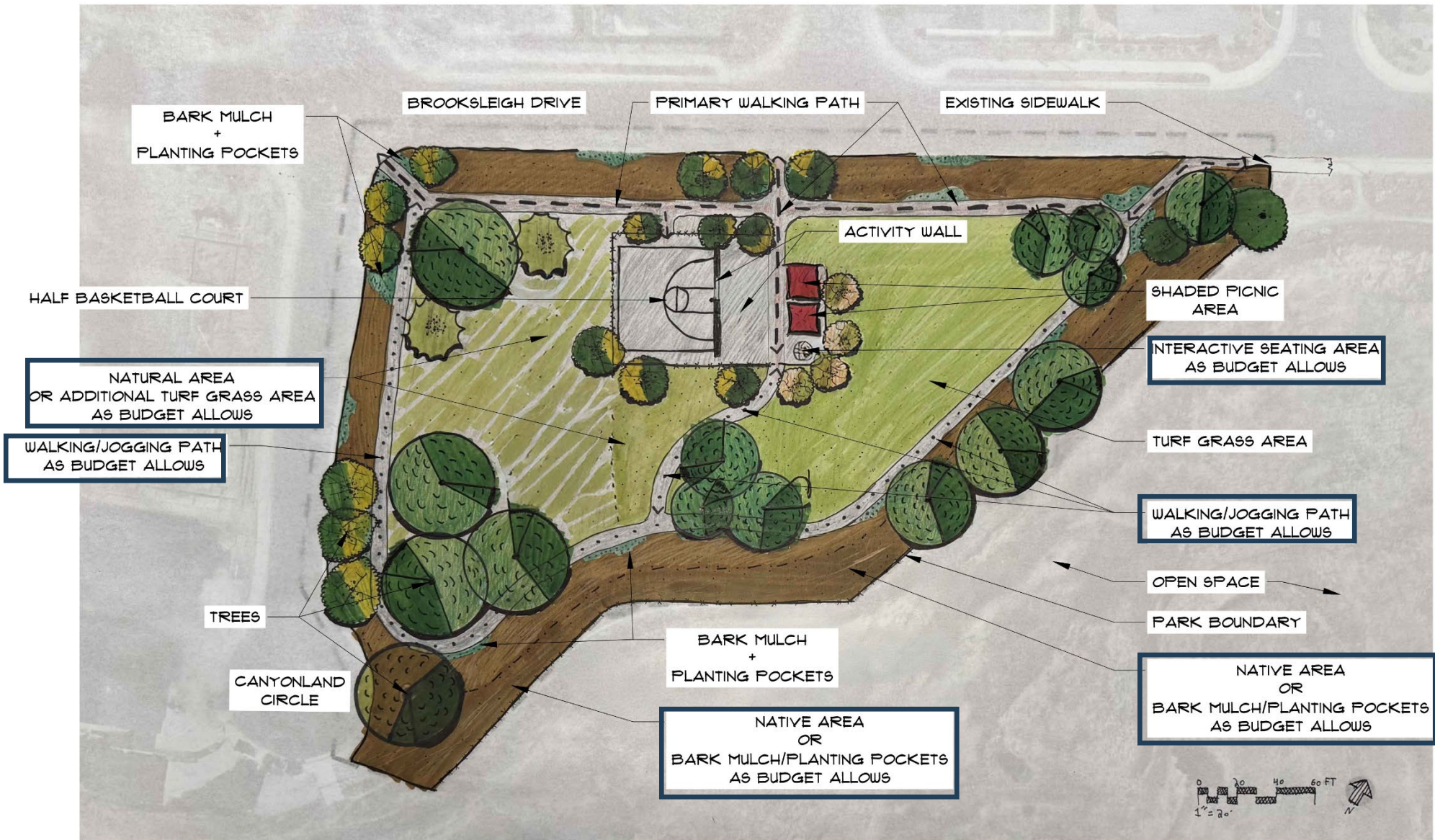
Feedback: Concerns

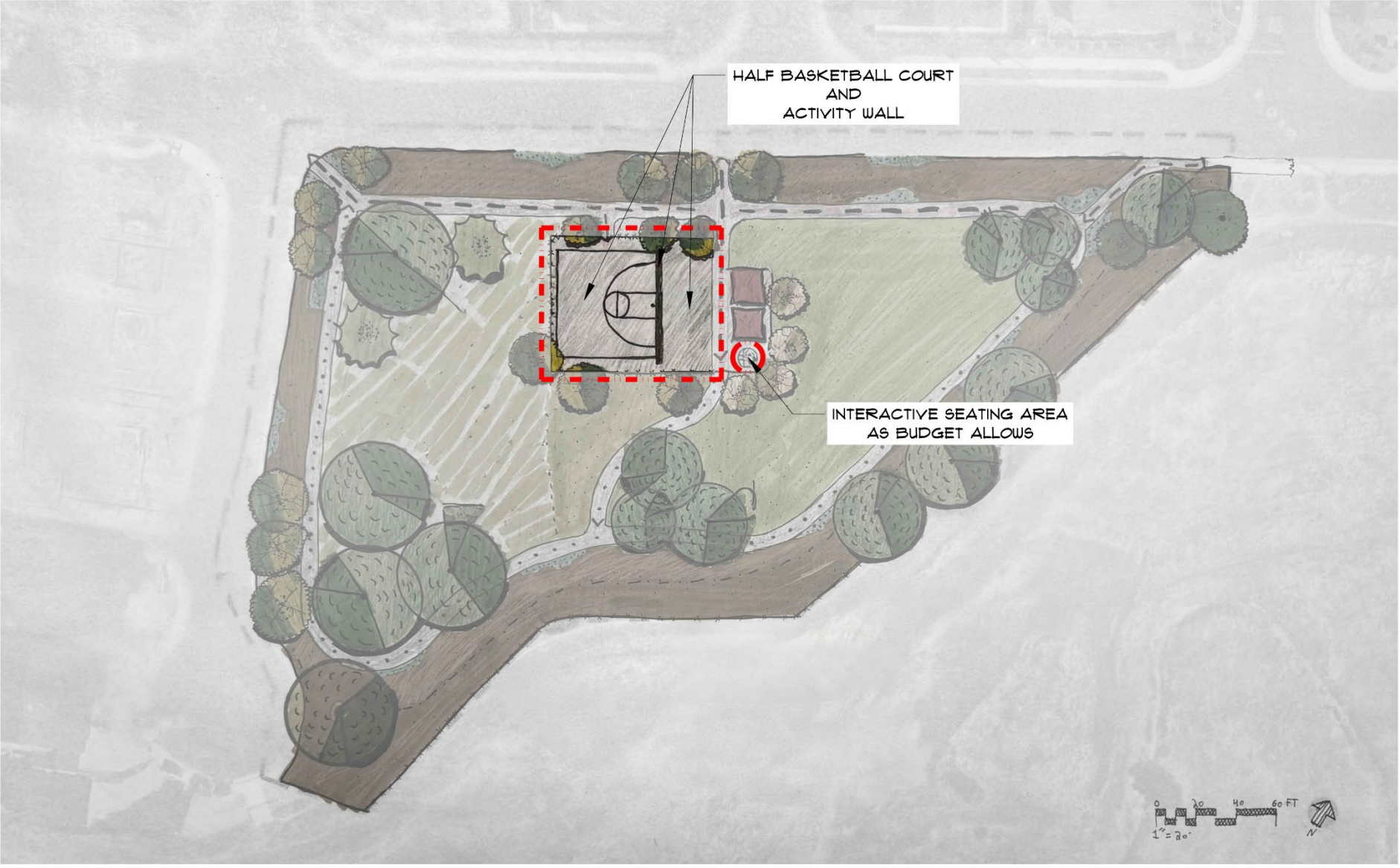
- Dogs
- Be different than JM-50 (Byouk Park)
- Seeing Costco from the park
- Traffic / stop signs



Feedback: Top items

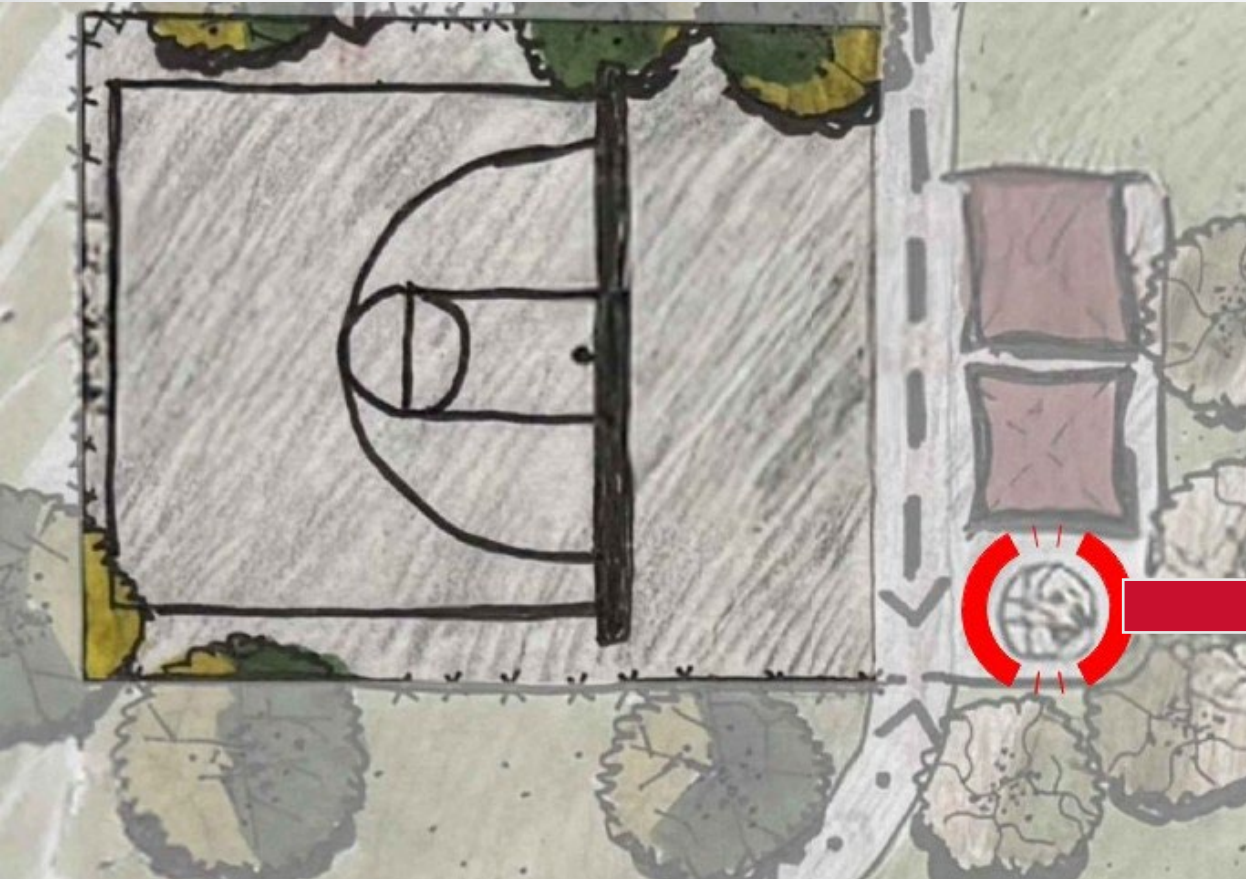
- ✓ Shaded picnic area
- ✓ Shade trees
- ✓ Sports court
- ✓ Outdoor play area







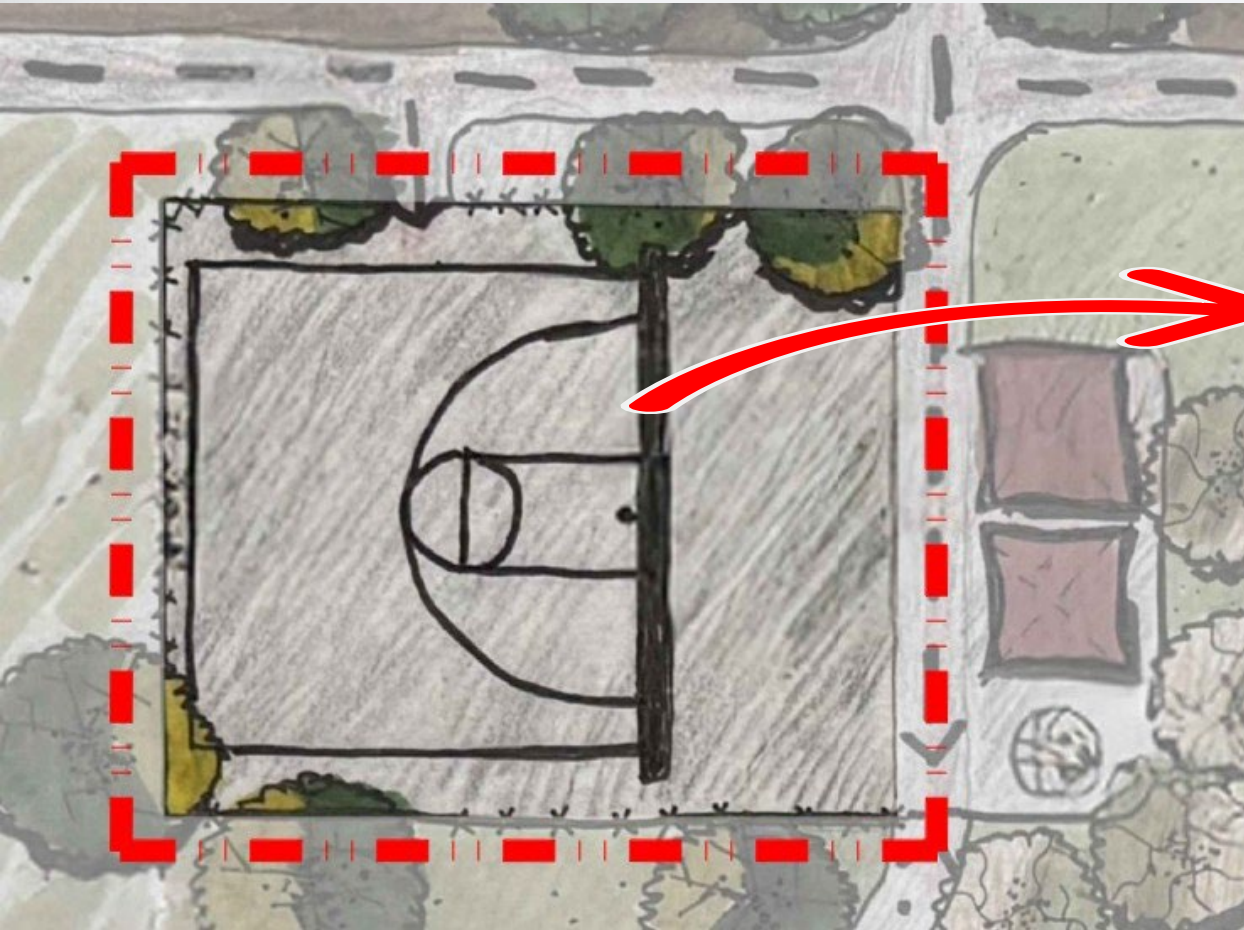
Interactive Seating Area *Concept*



As Budget Allows

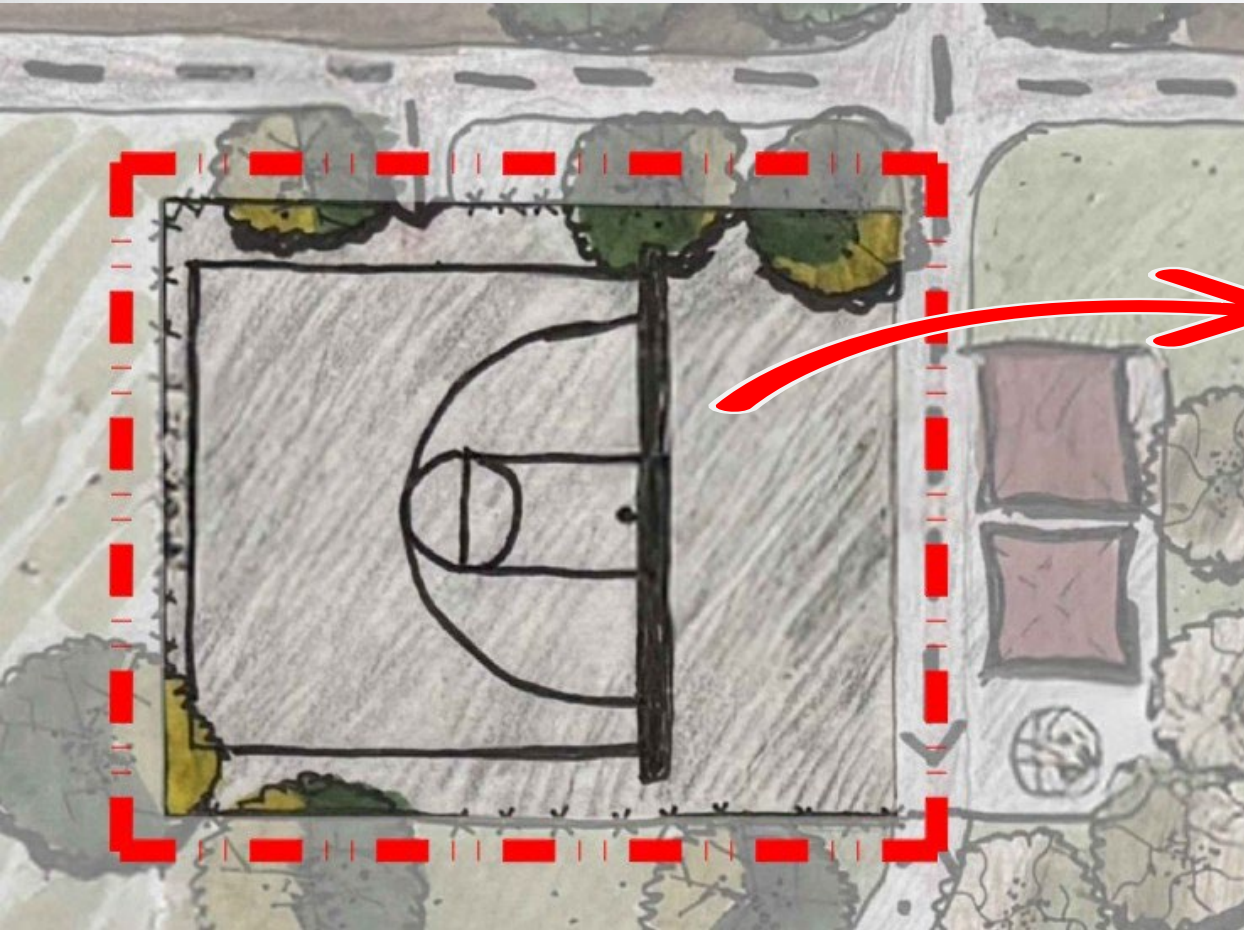


Activity Wall *Existing Examples*





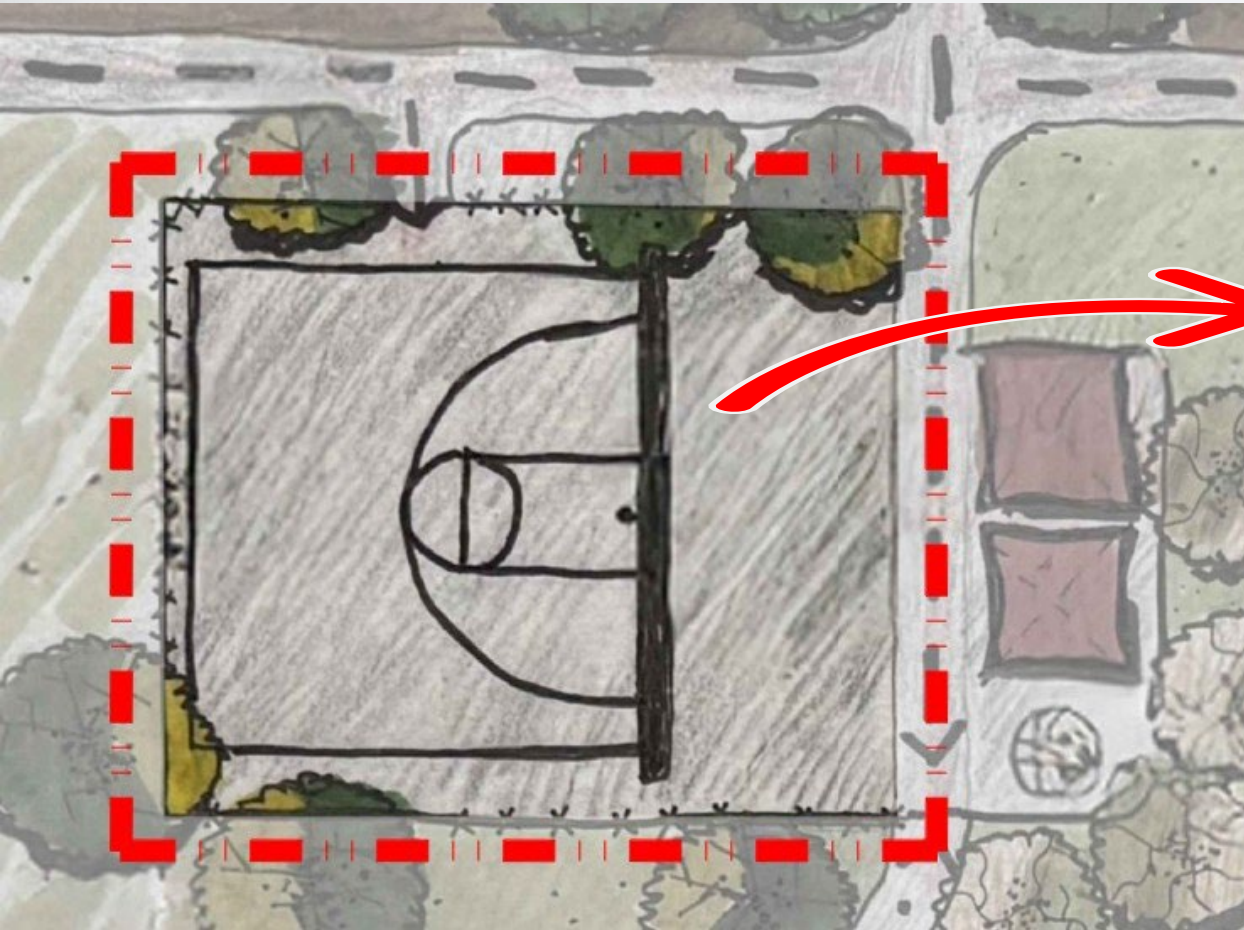
Activity Wall *Existing Examples*





Activity Wall

City concept – Fitness



VERTICAL JUMP CHALLENGE

How high can you jump?

Compare your jump, challenge your friends, and try to beat your best!

5' 6' 7' 8' 9' 10'

HOW IT WORKS

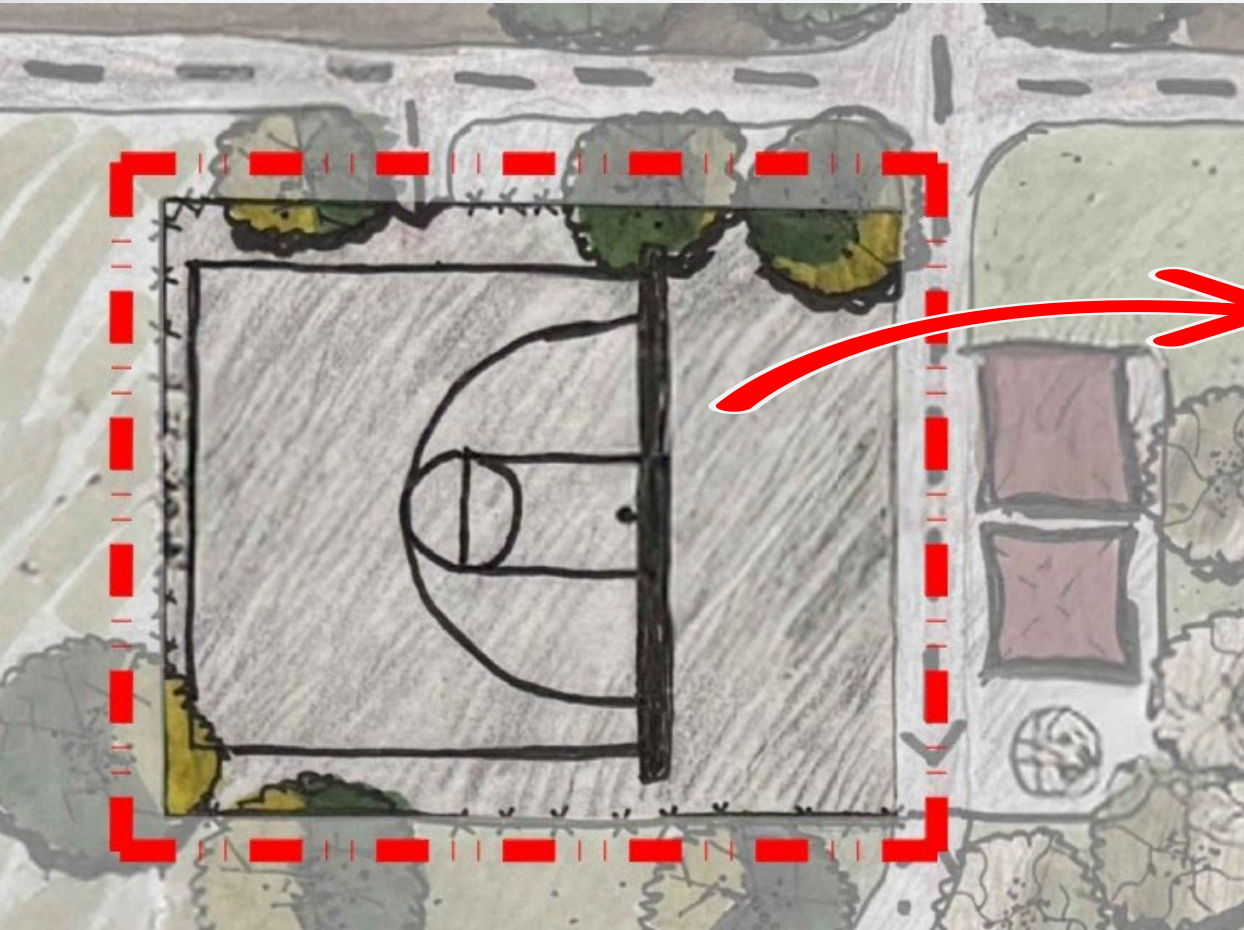
- CHECK YOUR STARTING POINT**
Stand next to the wall.
- JUMP & REACH**
Jump up and touch as high as you can.
- SEE YOUR PROGRESS**
Try again and beat your best!

FUN FOR ALL AGES!
Kids, teens, and adults can challenge themselves and track their improvement over time.



Activity Wall

City concept - Play



INTERACTIVE PLAY WALL

AIM. PLAY. MOVE. HAVE FUN!

A WALL FULL OF WAYS TO PLAY!

Throw, kick, or toss a ball or beanbag at the targets. Challenge your friends. Practice your aim. Play your way!

BULLSEYE CHALLENGE

NUMBER TARGETS

1	2	3
4	5	6
7	8	9

SHAPE CHALLENGE

HOW MANY CAN YOU HIT?

- 1-3
- 4-6
- 7-9
- 10-12
- 13+

→ GREAT JOB! ←

HOW IT WORKS

CHOOSE YOUR GAME

Pick a target and decide how you want to play.

THROW, KICK OR TOSS

Use a basketball, soccer ball, tennis ball, or beanbag.

TRACK YOUR SCORE

See how many bullseyes or targets you can hit!

PLAY AGAIN!

Challenge yourself or compete with friends.

TARGET WALL OPTIONS

BULLSEYE CHALLENGE

Different point values help players of all ages join the fun.

NUMBER TARGETS

1	2	3
4	5	6
7	8	9

Aim for your favorite number or try to hit them in order!

SHAPE CHALLENGE

Learn shapes, colors, and improve accuracy!

GREAT FOR ALL AGES

- KIDS**
Build coordination, confidence, and motor skills.
- TEENS**
Challenge friends and improve focus and accuracy.
- FAMILIES & SENIORS**
Active fun for everyone—play at your own pace!

SIMPLE. DURABLE. INCLUSIVE. Designed for active play. Built for the community. Made for everyone.

BASKETBALL
 SOCCER
 TENNIS BALLS
 BEANBAGS



Feedback: Top items

- ✓ Shaded picnic area
- ✓ Shade trees
- ✓ Sports court
- ✓ Outdoor play area



Questions

www.roseville.ca.gov

www.roseville.ca.gov/parksintheworks

parksintheworks@roseville.ca.gov





Next Steps

- Refinement = master plan
- Two week write-in period
- Parks & Recreation Commission
- City Council
- Construction document preparation

Break ground – Late Spring/early Summer 2027



Questions

www.roseville.ca.gov

www.roseville.ca.gov/parksintheworks

parksintheworks@roseville.ca.gov

